

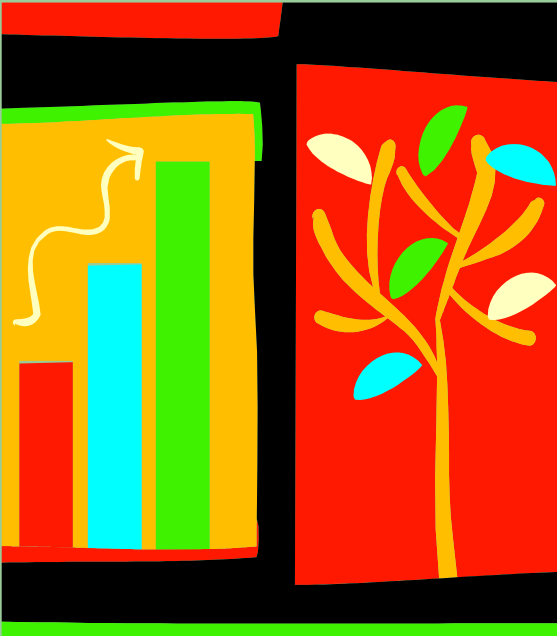
# Connected Emergency Response

(Register site in the CER framework)

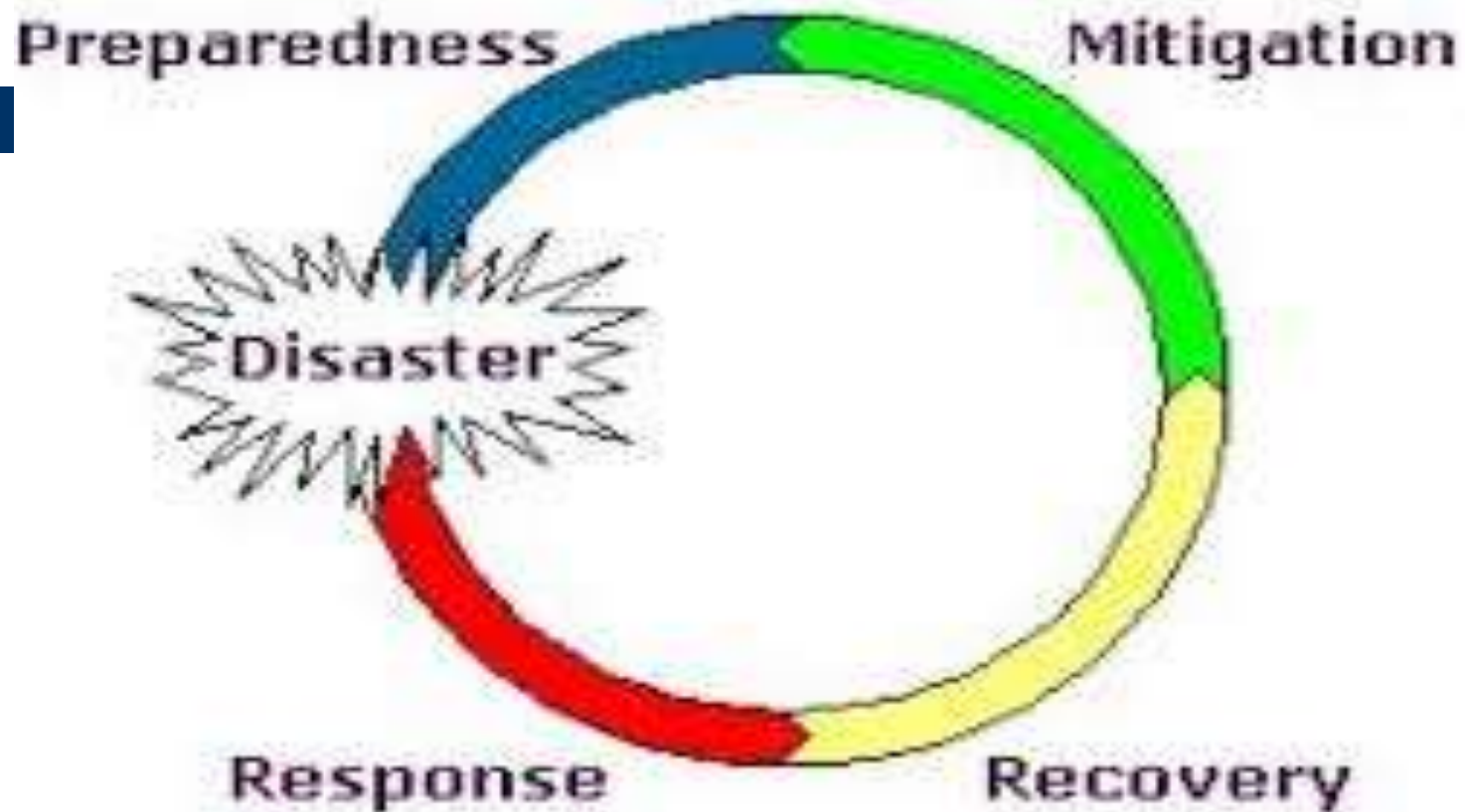


**Make your occupancy  
healthy and safe**

By,  
K.S.Venkatram  
(AOEC, 2021)



# Connected Emergency Response Centre



# Connected Emergency Response (CER)



## Registration Details

- **Name of site:**
- **Building Assessment Systems:**
- **Type of site:**
  - ☐ CERC member ☐ Government
  - ☐ Residential
  - ☐ Business
  - ☐ Social welfare / Public Infrastructure or Facility
  - ☐ Educational institution

Lookup...

# Connected Emergency Response (CER)



## Registration Details

- **Purpose of recording:**
- [ ] Help in “Connected Emergency Response”
- [ ] Facilitate “Timely emergency response”
- [ ] Assist in the “Governance of locations”
- [ ] CER & “**LifeScore Risk Mitigation**”
- [ ] CER & “**LifeScore Complaints Addressal**”
- [ ] CER & “**Defect Liability Reduction**”



# Little Preparedness can help

- The consultant's note - It is not too late to start off on a much needed CCMA initiative to respond to emerging threats, improve the health and safety of occupancy in a location and thereon reduce the risk or hazard posed by natural or man made disasters.
- Emergency Response departments will need SMART tools to bridge gaps and mitigate risks in a sustainable manner. Today's LifeScore ranked citizens could be needing this social accountability, where it might make a difference easily to life, property and the environment.

**DOP: 2017-2021**



# Social accountability and Acknowledgement

- Finally a simple Thank You note to those citizens or departments who participate in this Connected Emergency Response initiative. This acknowledgment could definitely help in making this endeavor more far reaching, impactful and socially accountable.

